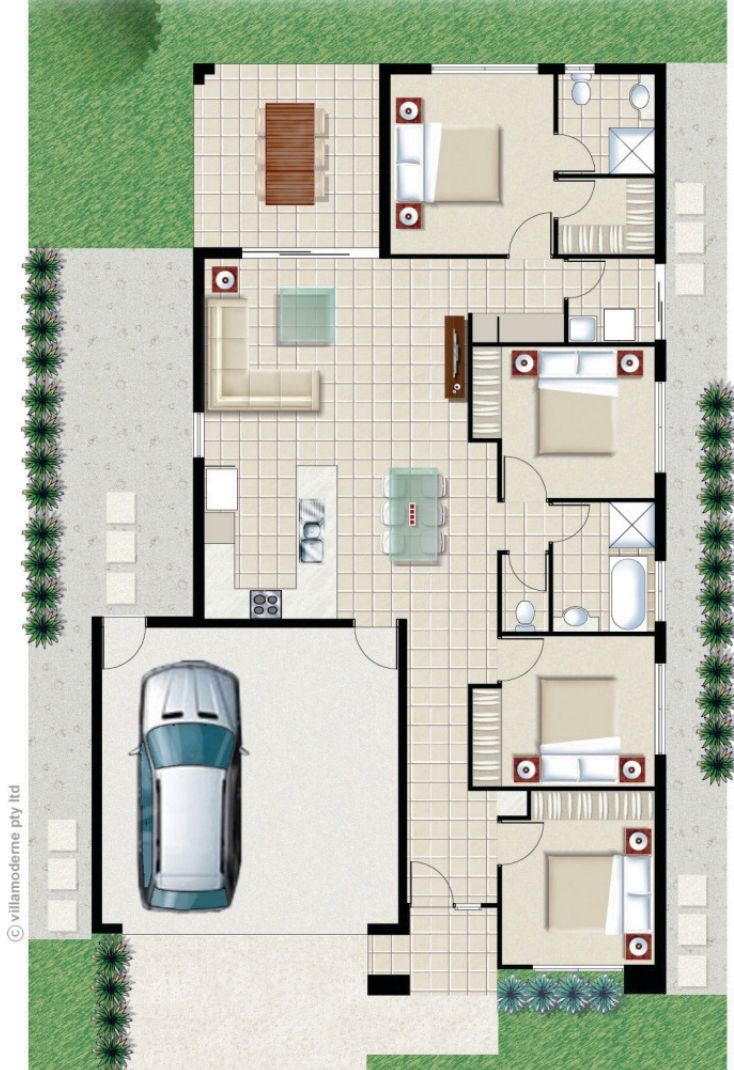


Karumba 401



© Villamoderne Pty Ltd

The Karumba 401 offers a large focus on communal and family orientation. With four beautifully appointed and spacious bedrooms, a central bathroom and separate Master Suite at the rear, this home is sure to delight. The rear Entertainment Area overlooks all aspects of the rear yard, making it perfect for children.



Facade B

Total Area	174.45 m ²
House Length	18.20 m ²
House Width	11.20 m ²
Min. Block Width	14.11 m ²

* To be used as a guide only. Final setbacks are subject to site conditions, council and covenant requirements.

Note:
 - Plans & elevations (including external finishes, fittings, floor covering, furniture & landscaping) as shown, are for illustration purposes only & do not form part of any contract. Plans are subject to change without notice.
 - Overall dimensions do not include eaves. Dimensions & areas may vary depending on facade style and construction methods.
 - Plans & elevations are not to scale. External stairs vary dependent on individual site.

Phone 4773 1000
 4 Carlton Street, Kirwan
www.tropicalhomes.com.au
info@tropicalhomes.com.au QBSA 2499. Hia Member.

